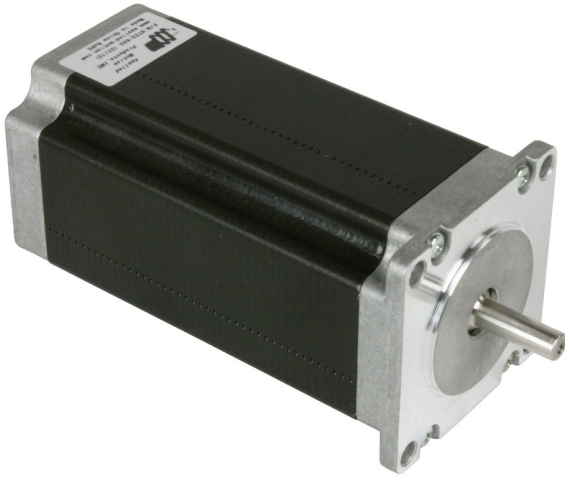


HT23-603

NEMA 23 High Torque Step Motor, 354 oz-in



Product Features

- 2-phase hybrid step motor
- High torque design
- Standard NEMA 23 dimensions
- Series or parallel wiring
- Optimized for microstepping



Description






The HT23-603 two-phase stepper motor is suitable for a wide range of motion control applications. Terminated with 8 motor leads, the motor can be connected in a few different ways, including bipolar series and bipolar parallel.

Specifications

Part Number	HT23-603
Frame Size	NEMA 23
Motor Type	High torque
Part Number w/Double Shaft	NA
Part Number w/Encoder	HT23-603D-ZAA
Motor Length	4.37 inches
Number of Lead Wires	8
Lead Wire Configuration	flying leads, no connector
Lead Wire/Cable Length	18 inches
Lead Wire Gauge	22 AWG
Unipolar Holding Torque	264 oz-in
Bipolar Holding Torque	354 oz-in
Step Angle	1.8 deg

Bipolar Series Current	2.5 A/phase
Bipolar Series Resistance	2.0 Ohms/phase
Bipolar Series Inductance	8.8 mH/phase
Bipolar Parallel Current	5.0 A/phase
Bipolar Parallel Resistance	0.5 Ohms/phase
Bipolar Parallel Inductance	2.2 mH/phase
Unipolar Current	3.5 A/phase
Unipolar Resistance	1.0 Ohms/phase
Unipolar Inductance	2.2 mH/phase
Rotor Inertia	1.06E-02 oz-in-sec ²
Integral Gearhead	No
Weight	3.3 lbs
Storage Temperature	-30 to 70 °C
Operating Temperature	-20 to 50 °C
Insulation Class	Class B (130 °C)
Maximum Radial Load	17 lbs
Maximum Thrust Load	3.4 lbs
Shaft Run Out	0.002 inch T.I.R. max
Radial Play	0.0008 inch max w/ 1.1 lb load
End Play	NA
Perpendicularity	0.004 inches
Concentricity	0.002 inches

Downloads

Datasheet	 StepMotorWiring-8-lead-striped.pdf
2D Drawing	 HT23-603_RevB.pdf
3D Drawing	 HT23-603.igs  HT23-603D.igs
Speed-Torque Curves	 StepMtrAppData_HT23-603_RevA.pdf
Agency Approvals	There are no related agency approval documents at this time.
Application Notes	There are currently no Application Notes available for this product.