

OVERVIEW

MOTOR SPECIFICATIONS

LINEAR SYSTEMS

CONNECTIVITY

PERIPHERALS

IP 65 MODELS & CONNECTIVITY

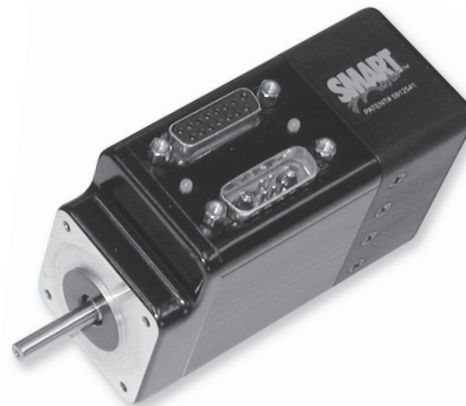
POWER SUPPLIES & SHUNTS

GEAR HEADS

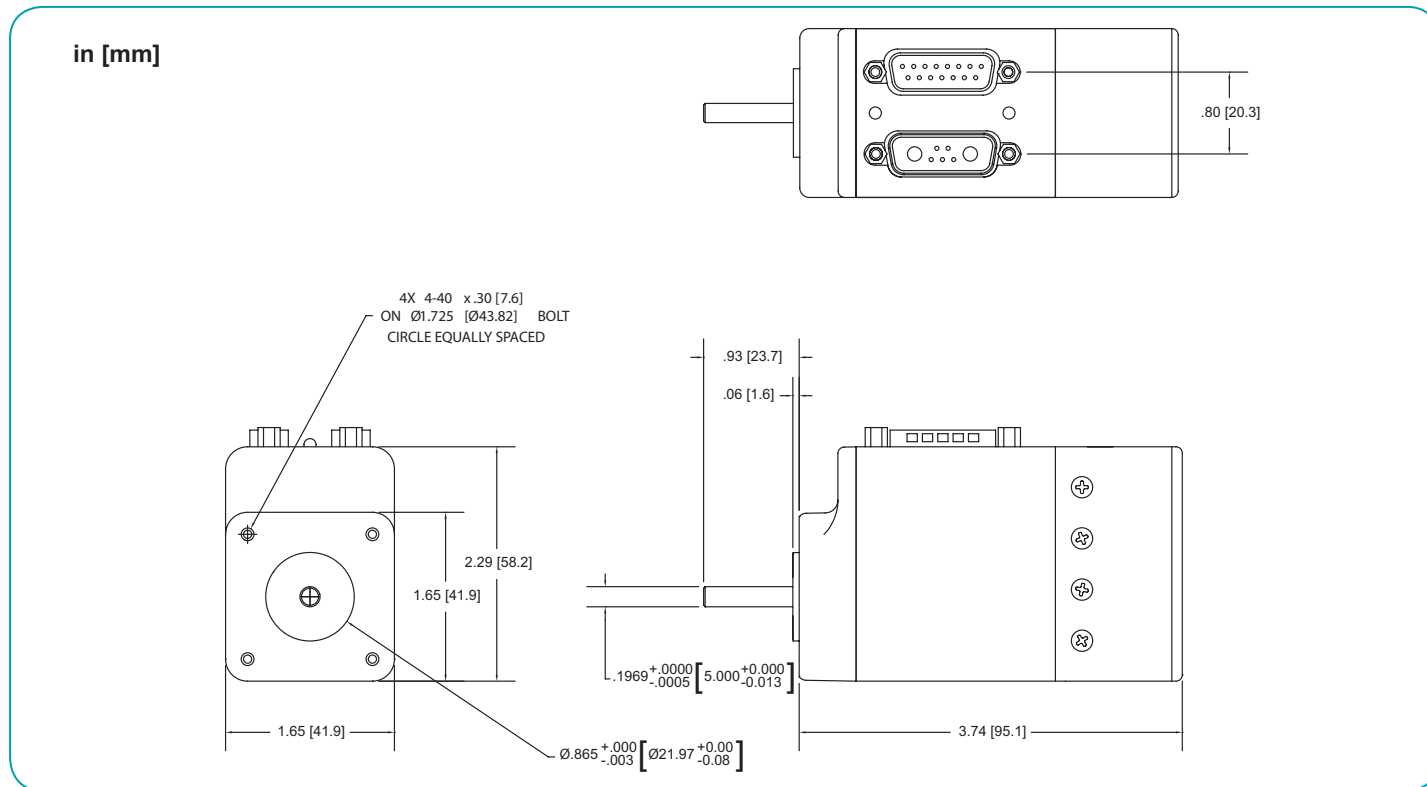
SOFTWARE

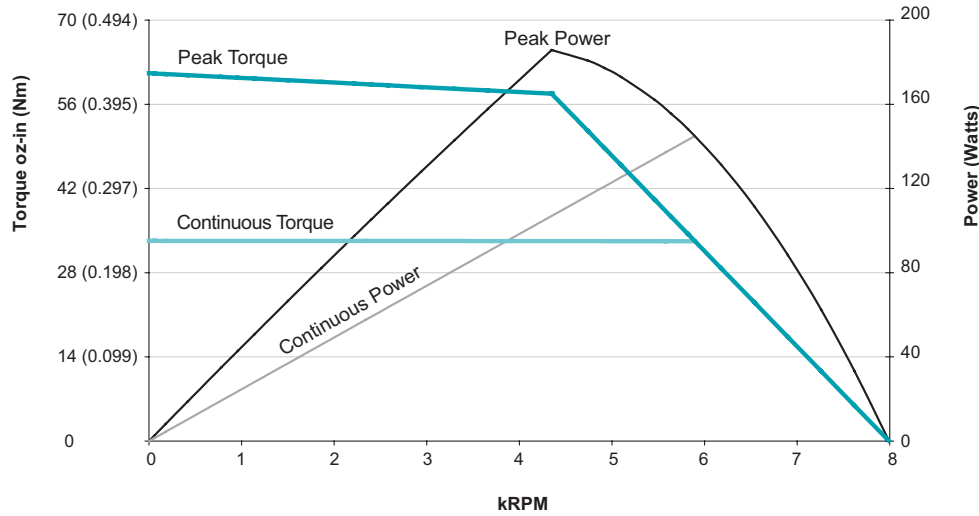
APPENDIX

SM17205D		
Continuous Torque	2.08	in-lb
	33	oz-in
	0.24	N-m
Peak Torque	3.82	in-lb
	61	oz-in
	0.43	N-m
Nominal Continuous Power	145	Watt
No Load Speed	7,900	RPM
Continuous Current @ Nominal Power	4.5	Amps
Voltage Constant	5.5	V/kRPM
Winding Resistance	1.8	ohms
Encoder Resolution	4,000	Counts/Rev
Rotor Inertia	0.00026	oz-in-sec ²
	0.184	10 ⁻⁵ Kg-m ²
Weight	1.2	lb
	0.55	kg
Shaft Diameter	0.197	in
	5.00	mm
Shaft, Radial Load	7	lb
	3.18	kg
Shaft, Axial Thrust Load	3	lb
	1.36	kg
DeviceNet Available	Yes	
ProfiBus Available		
CANopen Available	Yes	

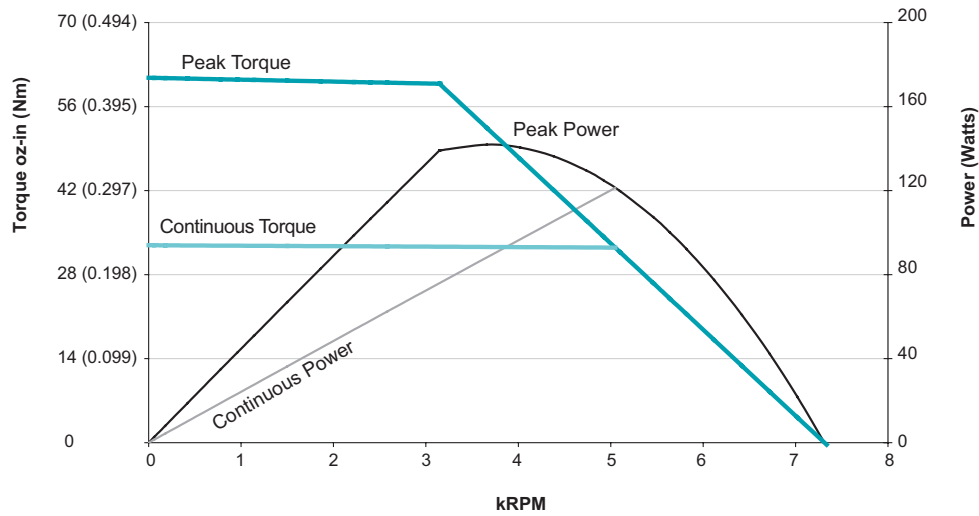


Animatics SmartMotor™ SM17205D (No Options) CAD Drawing

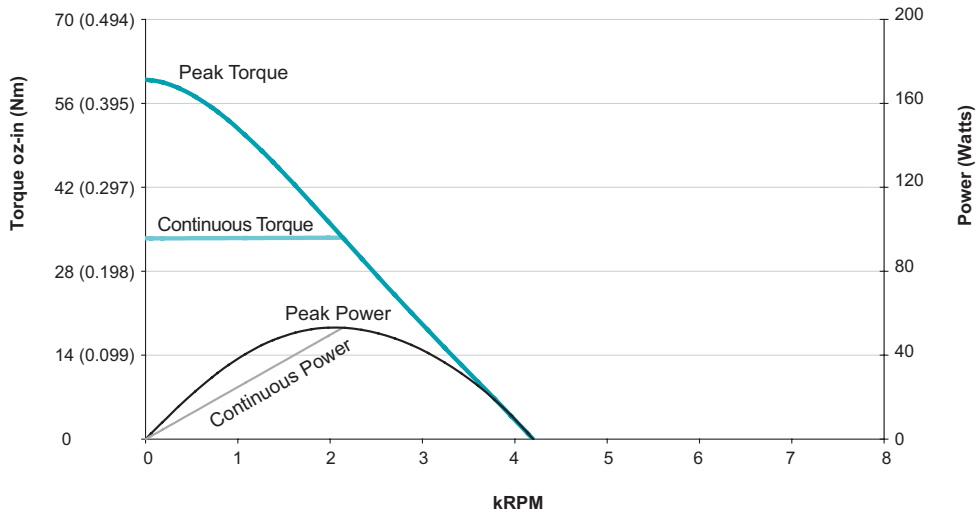




SM17205D
at 48 VDC
at rise to 85°C



SM17205D
at 42 VDC
at rise to 85°C



SM17205D
at 24 VDC
at rise to 85°C

All Torque curves based on 25°C ambient.
Motors were operated in Trap-Commutation Mode.
Please consult factory for Sine-Commutation Torque Curves.