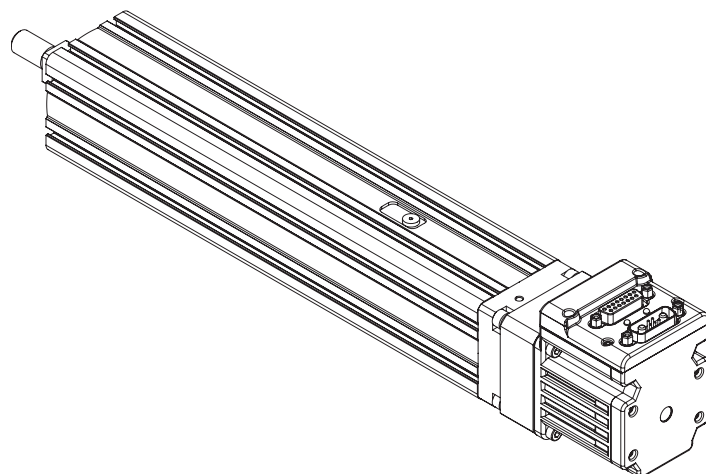


VL-CT55 Series Specifications

| Parameter | Value | Units | | |
|--|-------------------------------|--------------|--------------|---|
| Configuration & Physical Parameters | | | | |
| Motor | Animatics SmartMotors NEMA 23 | - | | |
| Coupling | Beam | - | | |
| Ball Screw Leads | 12 | mm/rev | | |
| Position Sensors | consult factory | - | | |
| Stroke Lengths | 50 - 300mm in 50mm steps | mm | | |
| Overall Length | Stroke + 274.9 | mm | | |
| Over-Travel | 0 | mm | | |
| Unit Mass | 1.94 + (stroke, mm)*0.0075 | kg | | |
| Performance | | | | |
| Unidirectional Repeatability | 20 | µm | | |
| Bi-directional Repeatability | 40 | µm | | |
| Accuracy | 0.021/300 | mm/mm | | |
| Max Velocity | 470 -1000 (stroke dependant) | mm/s | | |
| Max Acceration | 0.3 | G | | |
| Payload Mass | 22 | kg | | |
| Rated Velocity | 400 | mm/s | | |
| Lifetime* | 15000 | hr | | |
| Load Rating, Dynamic | | | | |
| Using SM23165DT motor | Direct Drive | 2:1 pulley** | 3:1 pulley** | - |
| Max Continuous Thrust | 262 | 490 | 737 | N |
| Max Peak Thrust | 394 | 788 | 1182 | N |



VL-CT55 series - Direct Drive

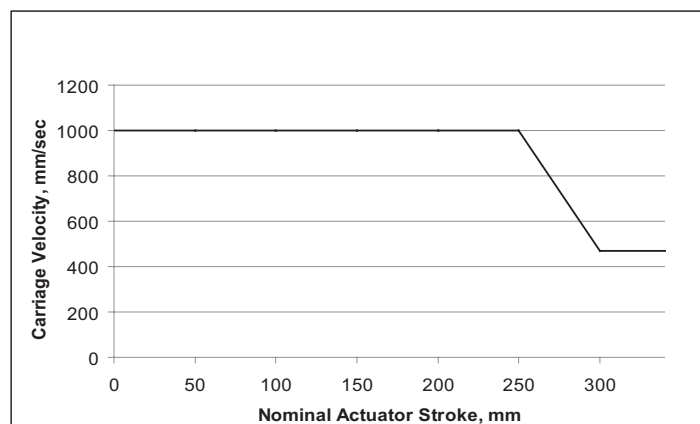


* Based on operating at an average speed of the rated velocity at the given payload. The Lifetime will be significantly reduced operating above the Rated Velocity and/or given payload.

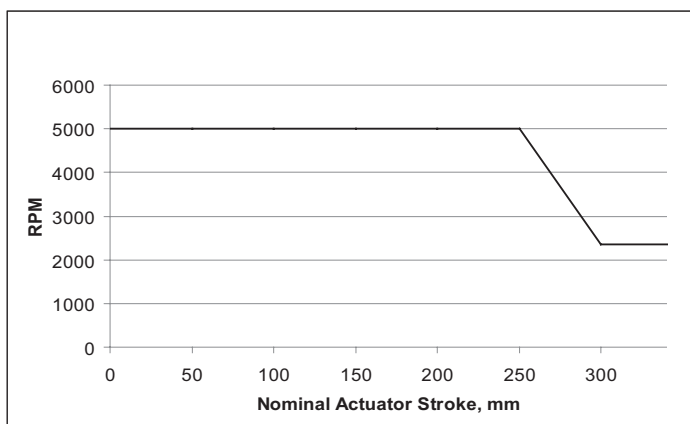
**Please see pages 105 for pulley offset CAD drawings.

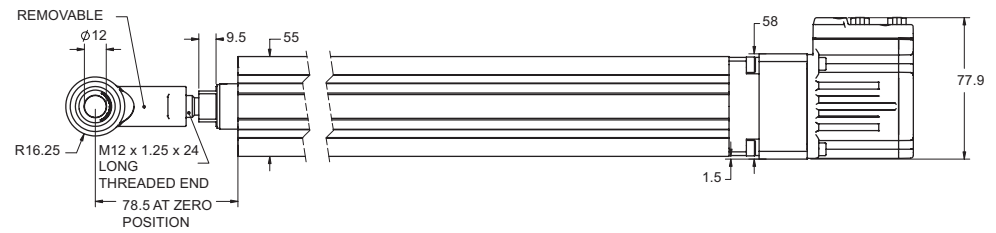
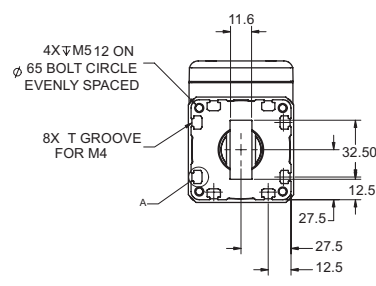
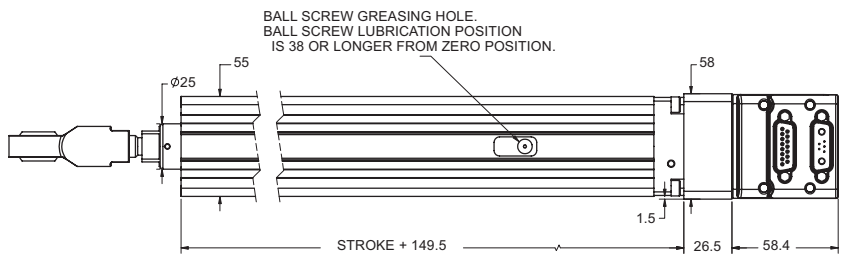
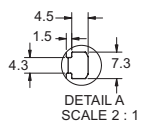
WARNING: Do not exceed these limits

VL-CT series - Maximum Permissible Carriage Velocity



VL-CT series - Maximum Permissible Screw Speed





Dimensions in millimeters

Note: For part numbers please refer to our Website at www.oemdynamics.com

Thrust Curve performance data in following section on page 109-126