

Unregulated DC Power Supplies Enclosed Case

Series: UPV

- Low cost DC power; ideal for motors, relays, solenoids, lamps
- 115 VAC input standard; optional 230 VAC input
- Terminal strip for easy wiring
- Perforated cover for efficient cooling
- Optional mounting ears for installation without opening up cover
- Fused AC input
- 2-year warranty



Specifications

Input Voltage:

0-125 VAC (variac not included)
(optional 0-250 VAC), 50-400 Hz

Output Voltage:

See table

Output Current:

See table

Ripple:

See table

Load Regulation:

Nominal output voltage is based on 115 VAC (or 230 VAC) input at approximately 50% of rated current

Line Regulation:

With fixed load, output voltage change is proportional to the input voltage change

Output Voltage Adjustment:

An adjustable autotransformer (not included) can be used to adjust output voltage by varying AC input

Polarity:

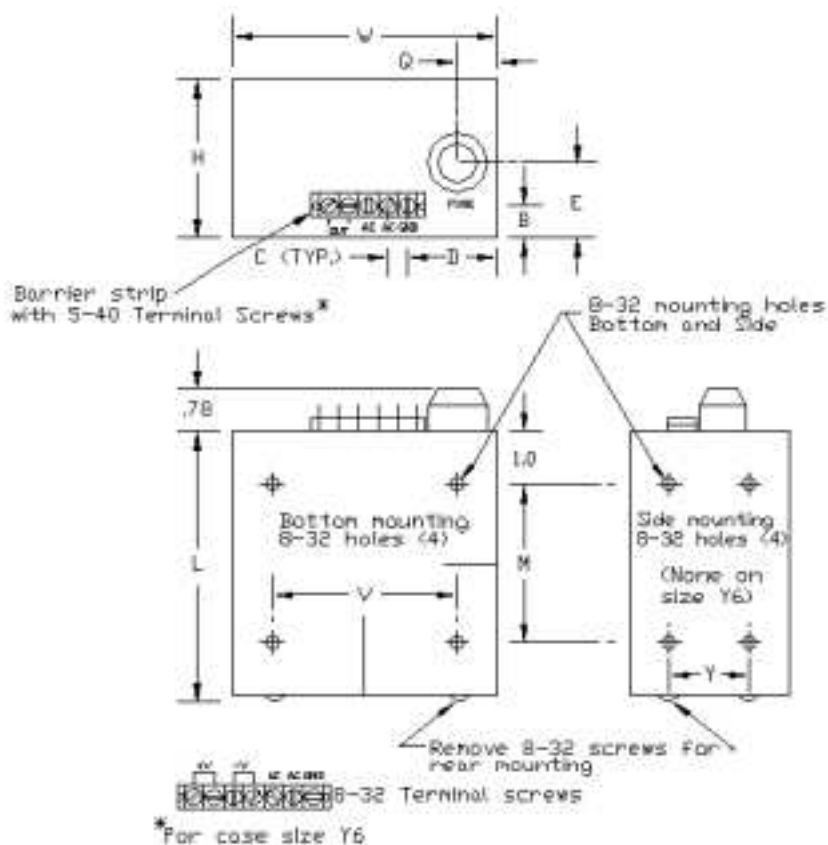
Output is floating, either positive or negative terminal may be grounded or floated up to 300V above ground

Ambient Temperature:

-10 to +65 °C, No derating required

Storage Temperature:

-55 to +85 °C



Dimensions												
Size	L	W	H	M	V	Y	Q	E	B	D	C	Lbs.
Y3	3.71	5.12	3.44	1.62	4.5	3	.56	1.37	.75	1.44	.375	3
Y5	5.09	5.12	3.44	3	4.5	3	.56	1.37	.75	1.44	.375	5
Y6	6.59	5.12	3.44	4	4.5	3	.56	1.37	.75	1.44	.375	8

Part No.	Case Size	Nominal Output (VDC)	Output (Amps)	Ripple (Vrms)	Output Voltage N/L to F/L (VDC)
UPV-7Y31	Y3	7	1.0	0.8	7.7 to 6.3
UPV-8Y30.4	Y3	8	0.4	0.4	8.8 to 7.2
UPV-9Y31	Y3	9	1.0	0.7	9.9 to 8.1
UPV-9Y610	Y6	9	10.0 5.0	2.3 1.3	11.5 to 7.5 9.0
UPV-12Y31.5		12	1.5	2.5	14.9 to 10.9
UPV-12Y610	Y3 Y6	12	10.0 5.0	2.3 1.3	14.1 to 9.8 11.5
UPV-16Y31	Y3	16	1.5	0.7	17.6 to 14.4
UPV-16Y610	Y6	16	10.0 5.0	2.3 1.3	18.8 to 14.2 16.0
UPV-20Y610	Y6	20	10.0 5.0	2.4 1.4	23.7 to 18.3 20.4
UPV-24Y31	Y3	24	1.0	1.7	26.4 to 21.6
UPV-24Y65	Y6	24	5.0	2.5	26.5 to 21.0
UPV-24Y610	Y6	24	10.0	2.4	26.8 to 21.4
UPV-35Y52	Y5	35	2.0	1.5	38.5 to 31.5
UPV-35Y65	Y6	35	5.0	3.3	38.0 to 30.0
UPV-40Y52	Y5	40	2.0	1.5	44.0 to 36.0
UPV-40Y65	Y6	40	5.0	3.3	45.0 to 37.0
UPV-48Y30.4	Y3	48	0.4	0.6	52.8 to 43.2
UPV-60Y51	Y5	60	1.0	2.8	65.3 to 53.0
UPV-60Y30.25	Y3	65	0.25	0.4	71.5 to 58.5
Ask for Specials. Custom Variations quoted and shipped promptly					